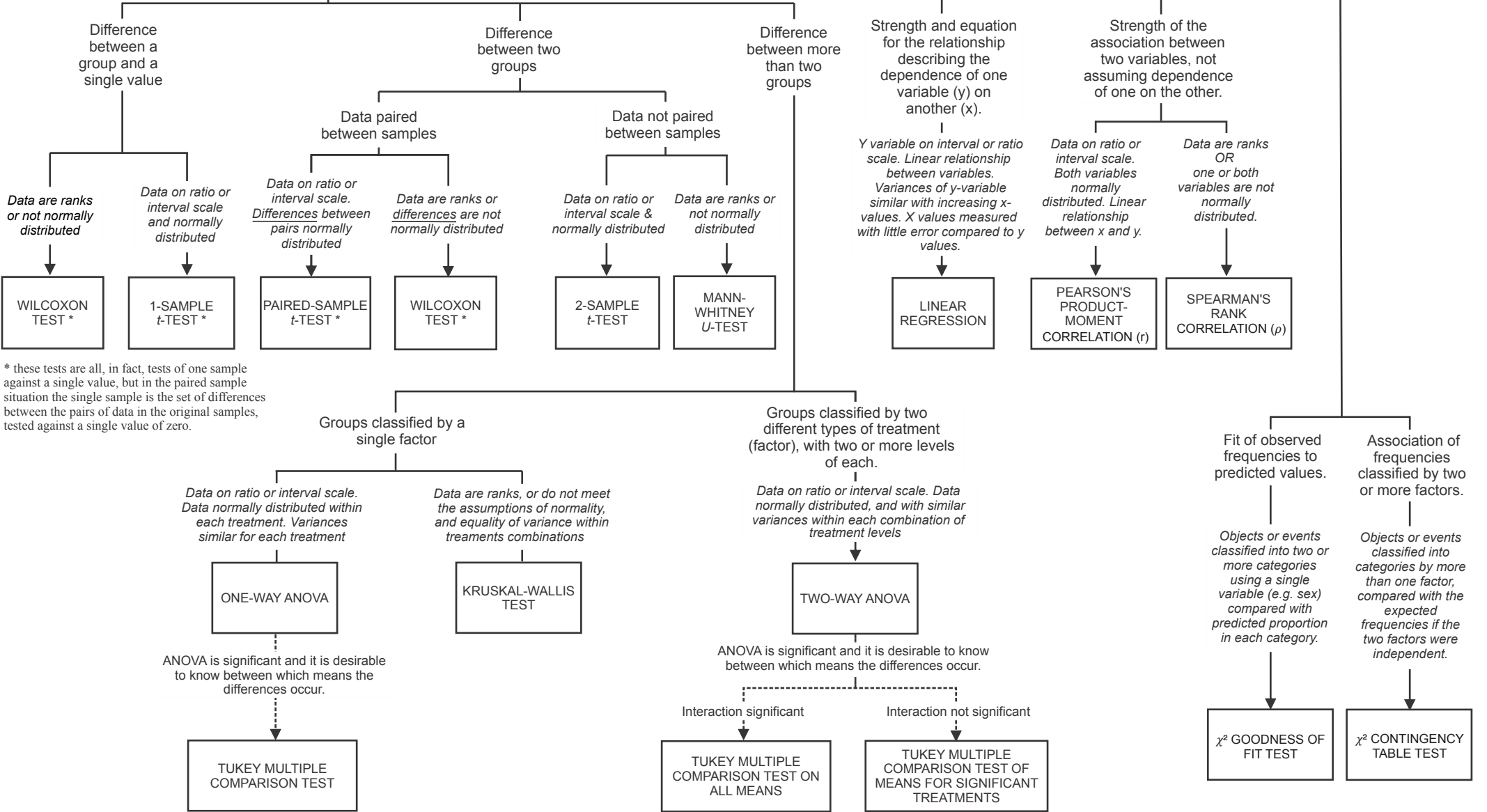


**1** Are there significant differences between the means or medians ('central tendency') of measurements made on objects in two or more groups, or between a single mean or median and a theoretical value?

**2** Is there a association between two variables? What is the equation that describes the dependence of one variable on the other?

**3** Are there significant differences between the observed and expected number of objects or events classified by one or more categorical variables?



\* these tests are all, in fact, tests of one sample against a single value, but in the paired sample situation the single sample is the set of differences between the pairs of data in the original samples, tested against a single value of zero.